

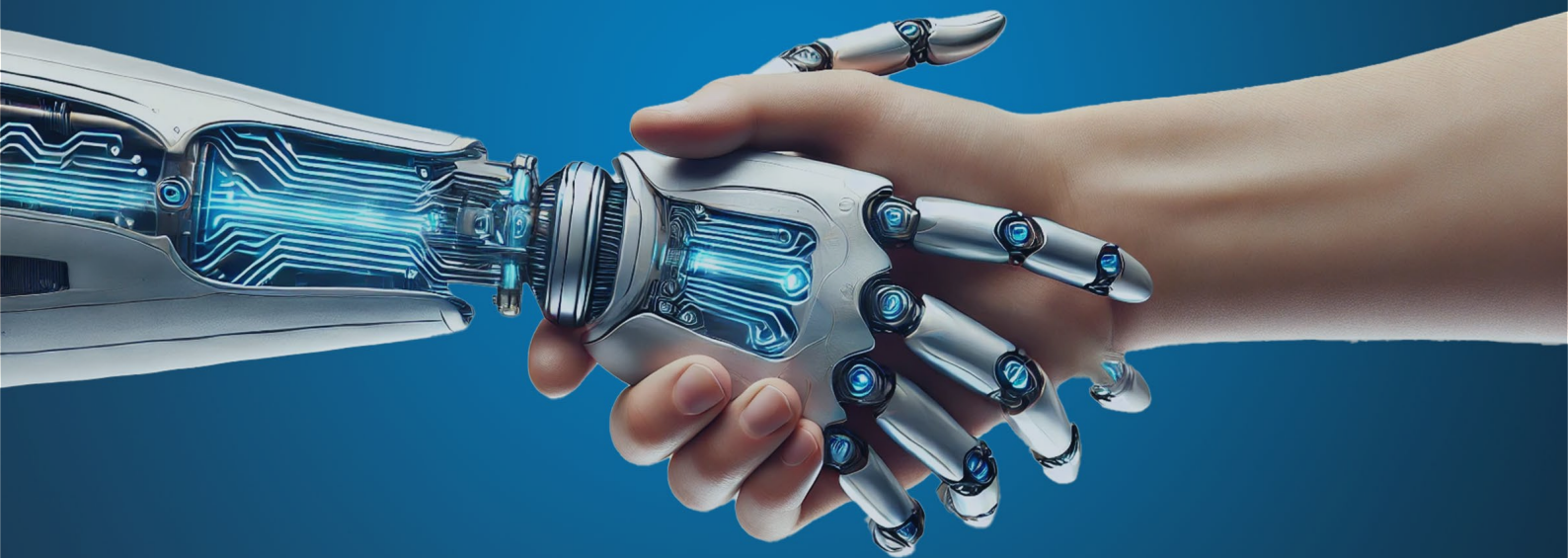
**NEW** SKILLS FOR THE **NEW** WORLD

90% OF ORGANISATIONS ARE  
UNPREPARED FOR AI, ...

YOUR **LEADERSHIP**

COULD DEFINE

YOUR **COMPETITIVE EDGE**



Enable your people to adopt AI technologies responsibly and with confidence, using tailored solutions that inspire trust, accelerate adoption, and deliver measurable business results.

**SPC**

# The Challenge

AI is rapidly fundamentally transforming how we work and think about work, but most organisations are struggling to get started or get beyond pilots.

**Without the right skills and growth strategies:**



Employees feel unprepared, unsupported; their trust in AI is low and adoption lacks traction.



Organisations risk disengagement, cyber security breaches, and poor returns on technology investments.



AI adoption is piecemeal, employees lack direction, productivity gains and competitive advantage are missed.



## What's Needed?

The skills, behaviours, psychological safety, and drive for business in the **Growth through People** framework that will bridge the gap between people and machines.



# Why Work With Me?

“

Stephanie's ability to meet you where you are and propel you forward with confidence and insights is her trademark. Her expertise in transformation success and skills development has significantly enhanced our capabilities and our ability to impact.

”

**CPO, Aviation Industry**



At SP Consulting, I combine **25 years of global experience** as an organisational architect with a proven ability to drive measurable results. What sets me apart is my unique approach:



**I transform AI adoption into a competitive advantage:**

By aligning skills, culture, and strategy, I ensure your workforce is not just ready for AI but confident, capable, and committed to its adoption.



**I focus on culture and human-centric skills:**

Using my 3Cs of Change & Growth Model—endorsed by McKinsey—I foster trust, agility, and critical meta-skills like emotional intelligence and ethical oversight.



**I deliver practical, strategic results:**

My tailored, high-impact frameworks align workforce capabilities with business goals, driving sustained engagement and double-digit growth.

**Growth isn't about incremental or reactive change—it's about empowering your organisation to lead the future of work.**

# SOLUTION

Introducing the **Growth through People Lab**, a tailored program designed for executive leaders and teams to:



**Cultivate human+machine leadership** to seamlessly integrate AI and emerging technologies.



**Master critical meta-skills** like strategic thinking, ethical oversight, and digital fluency to inspire trust and drive adoption.



**Align people and technology** through a clear, actionable roadmap that delivers measurable business results.

## The result?

A workforce equipped to confidently partner with AI, delivering new levels of productivity and measurable business growth.

# HOW IT WORKS

## 01 Assess Your Readiness

Start with a short **Growth Readiness Assessment** to evaluate your organisation's starting point and for AI adoption needs.

## 02 Choose Your Lab Format

Select the format that fits your goals:



### Ignite (1 Day)

A focused session to identify critical meta skills and jumpstart your strategy.

### Accelerate (2 Days)

A deeper dive into the 3Cs—Culture, Capacity, and Capability—to design a tailored implementation roadmap.

### Ascend (+5 Days)

A transformational, multi-day programme that combines Ignite and Accelerate to mobilise solutions with key stakeholders.

## 03 Leave with a Clear Roadmap

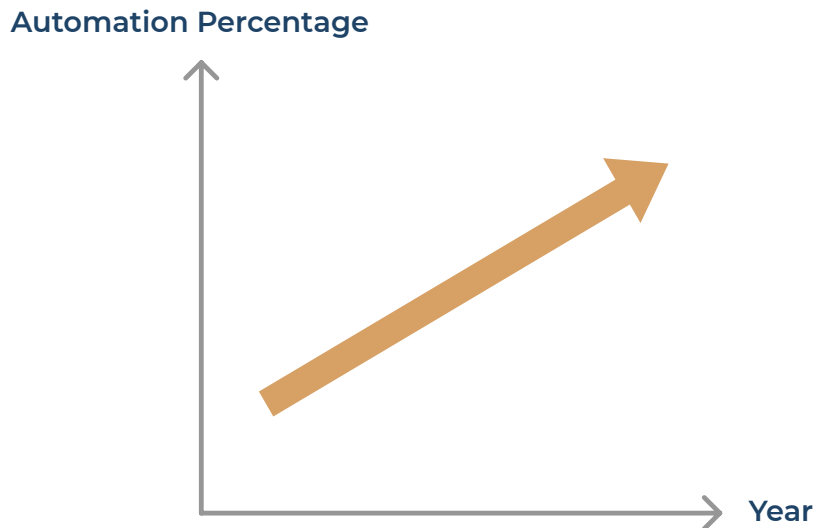
Every Lab includes:

- ✓ Pinpointing where you are losing value
- ✓ Defining a compelling Growth Vision
- ✓ Co-Creating 90 Day Growth Enabler Roadmap
- ✓ How-To Execution Guidelines
- ✓ Skilling up you and your team

Walk away with a customised plan, ready to integrate people and tech strategies seamlessly and confidently.

# WHY ACT NOW?

By 2030, up to 30% of current work could be automated<sup>1</sup>. Without a clear strategy to develop the skills your workforce needs to trust and use AI effectively, your organisation risks costly, ineffective investments in technology and eroded employee trust in digital transformation.



## 30% Projected Increase in Automation by 2030

Enabling Growth now will give you a competitive edge in AI integration, through:



Boosted productivity and employee engagement.



Greater trust and measurable business impact.



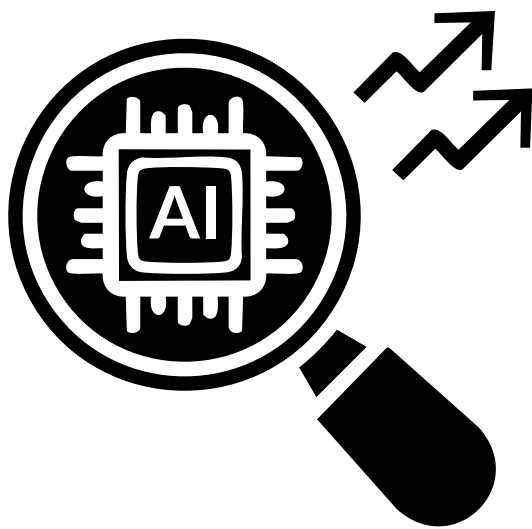
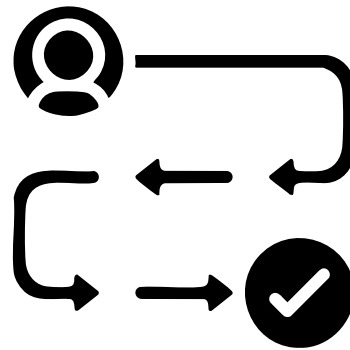
Achieving tangible cost savings and revenue growth by leveraging released productivity towards prioritising core function transformation.

# BENEFITS

Recent BCG research<sup>2,3</sup> reveals that organisations investing in upskilling and building a culture of enablement to support their AI strategies achieve:

## Enhanced Customer Experiences:

Employees focus on high-value work, while AI handles repetitive tasks, boosting Customer Satisfaction by up to 45%.

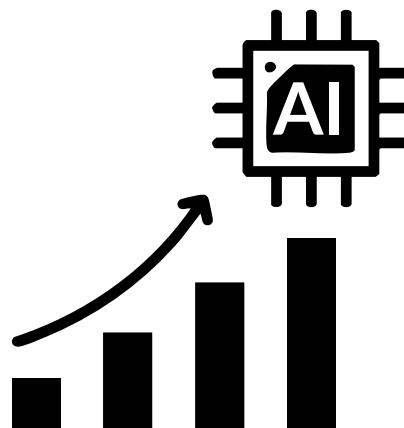


## Stronger Differentiation:

Companies integrating AI into core functions with skilled workforces realise 1.5 times higher revenue growth and 1.4 times greater ROI on capital.

## Sustainable Growth:

AI-empowered teams drive innovation, contributing to 38% EBIT growth over three years through effective AI adoption.



# Your workforce is your greatest asset. Let's unlock its full potential together.

Through the **Growth Through People Lab**, we can build a future where your people have the skills and desire to partner with AI to achieve their best work, drive your business forward, and create exceptional experiences for your customers.



The future is here.

**Book a consultation today**

and equip your workforce to lead it.

See more **Testimonials** and **Value Stories**

<sup>1</sup> The race to deploy generative AI and raise skills | McKinsey

<sup>2</sup> Five Must-Haves for Effective AI Upskilling | BCG

<sup>3</sup> AI Adoption in 2024: 74% of Companies Struggle to Achieve and Scale Value | BCG



## Connect with Us

 <https://spconsulting.ie/>

 +353 087 978 2127

 [info@spconsulting.ie](mailto:info@spconsulting.ie)